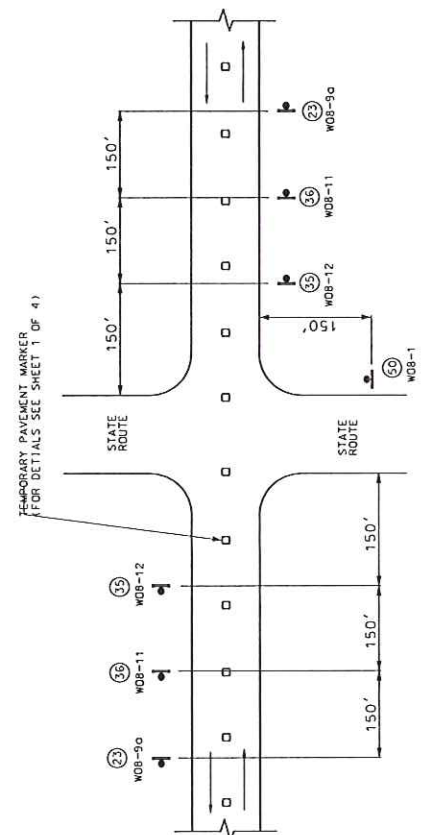


SIGN SPACING FOR MAINLINE

(DETAIL SHOWS IS BASED ON A PROJECT MEETING ALL CONDITIONS: NO CENTER STRIPE, UNEVEN LANES, SHOULDER DROP OFF AND BUMP.)
 (1) IF ONLY ONE CONDITION EXISTS (UNEVEN LANES OR SHOULDER DROP OFF), THE SIGN SPACING SHALL BE AT 1 MILE INTERVALS.



SIGN SPACING AT STATE ROUTE INTERSECTIONS

GENERAL NOTES:

SIGN 35 AND TEMPORARY PAVEMENT MARKING INSTALLED WHERE CENTERLINE STRIPING HAS BEEN COVERED OR REMOVED. SIGNS ARE TO REMAIN IN PLACE UNTIL THE PERMANENT CENTERLINE PAVEMENT MARKINGS ARE IN PLACE. SIGNS SHALL BE COVERED OR REMOVED WHEN PAVEMENT CENTERLINE MARKING HAS BEEN INSTALLED.

SIGN 35 IS PLACED AT APPROXIMATELY TWO-MILE INTERVALS AND A STATE ROUTE JUNCTIONS. WHEN THE INSTALLATION AT A JUNCTION IS WITHIN ONE-EIGHTH MILE OF THE NORMAL MAINLINE SIGN 35, THE LATTER MAY BE ELIMINATED.

ALL SIGNS SHALL BE POST MOUNTED AND IN ACCORDANCE WITH STANDARD PLAN 616-10 AND 903-03.

FOR TEMPORARY PAVEMENT MARKING REFER TO SHEET 1 OF 4.

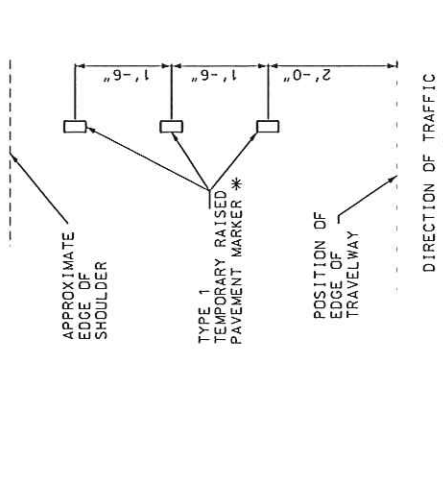
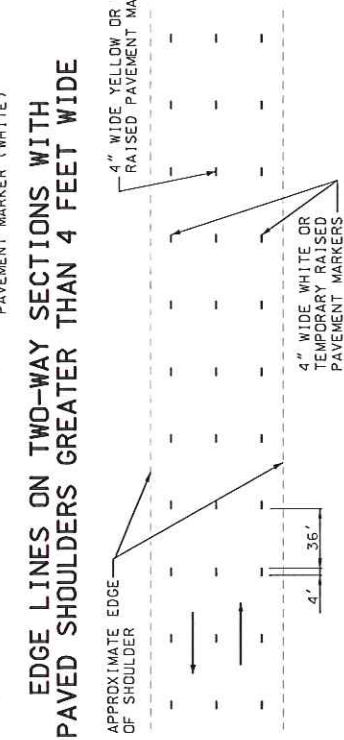
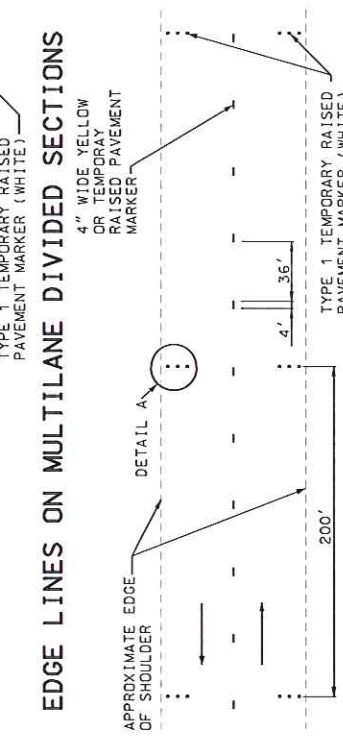
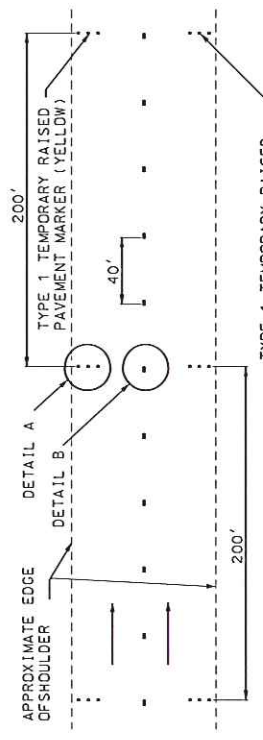
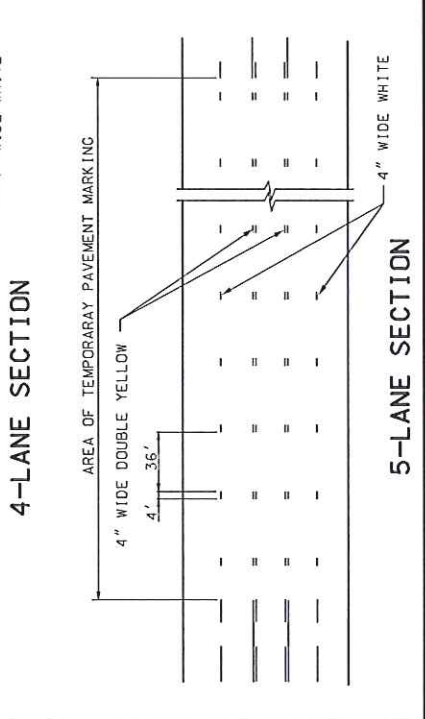
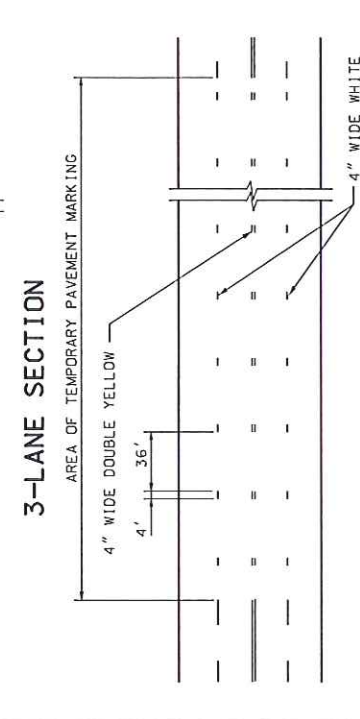
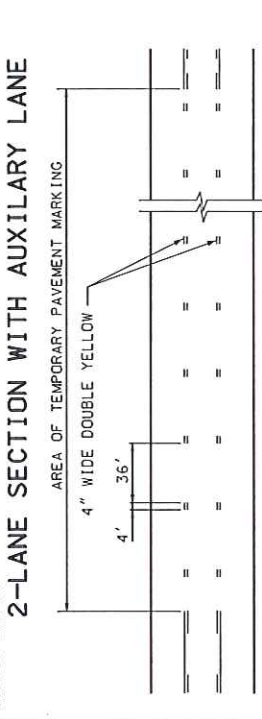
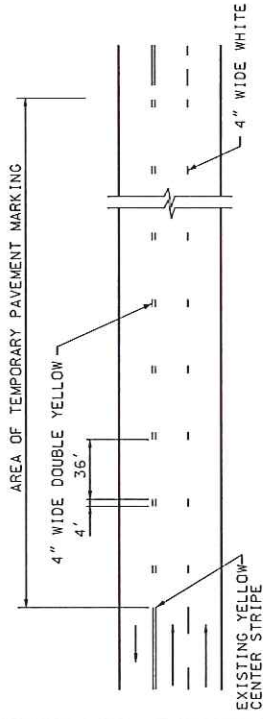


MISSOURI HIGHWAYS AND TRANSPORTATION COMMISSION
 105 WEST CAPITOL
 JEFFERSON CITY, MO 65102
 1-888-ASK-MODOT (1-888-275-6636)

TEMPORARY PAVEMENT MARKING
 TWO-LANE TWO-WAY HIGHWAY SIGNING

DATE EFFECTIVE: 07/01/2011
 DATE PREPARED: 8/1/2011
 SHEET NO. 4 OF 4
620.10C

"THIS MEDIA SHOULD NOT BE CONSIDERED CONTRACT DOCUMENT."



* THREE TYPE 1 TEMPORARY RAISED PAVEMENT MARKERS SHALL BE USED IF SHOULDER IS 6' OR WIDER. OTHERWISE, USE TWO TYPE 1 TEMPORARY RAISED PAVEMENT MARKERS.

GENERAL NOTES:

INTERMEDIATE LIFTS FOR ALL PROJECTS. TEMPORARY PAVEMENT MARKINGS SHOULD EITHER BE SHORT TERM MARKING TAPE, TEMPORARY RAISED PAVEMENT MARKERS (TRPM) OR PAINT. IF USED, TRPM SHALL BE REMOVED BEFORE THE NEXT LIFT IS INSTALLED.

FOR TWO-LANE TWO-WAY ROADWAYS, TEMPORARY RAISED PAVEMENT MARKERS, IF USED, SHALL BE INSTALLED IN ACCORDANCE WITH SECTION 620 OF THE MISSOURI STANDARD SPECIFICATIONS FOR HIGHWAY CONSTRUCTION.

MISSOURI HIGHWAYS AND TRANSPORTATION COMMISSION

105 WEST CAPITOL
JEFFERSON CITY, MO 65102
1-888-4ASK-MODOT (1-888-275-6565)

TEMPORARY PAVEMENT MARKING

TEMPORARY PAVEMENT MARKING

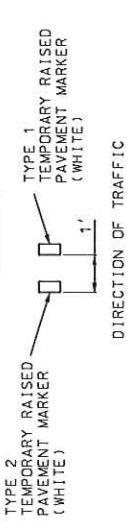
SHEET NO. 1 OF 4

620.10C

DATE EFFECTIVE: 07/01/2011

DATE PREPARED: 07/20/11

THIS MEDIA SHALL NOT BE CONSIDERED A CERTIFIED DOCUMENT.



**SECTION 620
PAVEMENT MARKING**

SECTION 620.60 TEMPORARY RAISED PAVEMENT MARKERS.

620.60.1 Description. This work shall consist of installing, maintaining and removing reflectorized temporary raised pavement markers (RPM's) on roadway lane lines, centerlines or edge lines as shown on the plans or as directed by the engineer.

620.60.2 Material. All material shall be in accordance with Division 1000, Material Details, and specifically as follows:

Item Section

Temporary Raised Pavement Markers [1048.50](#)

620.60.3 Construction Requirements.

620.60.3.1 Temporary RPM's shall be of the colors shown on the plans unless otherwise directed by the engineer. Reflective faces shall be oriented to face traffic. Temporary RPM's shall be installed according to the manufacturer's recommendations and placed at approximately 40-foot intervals.

620.60.3.1.1 Type 1 Temporary RPM's, with covers, shall be used for Seal Coat as defined in Section 409 and for surface treatment projects as defined in Sec 413 with the exception of Section 413.30. ~~When used for other than surface treatment projects, type 1 temporary RPM's, with no covers, may be used for temporary edgeline marking as shown on the plans.~~

Deleted: when temporary RPM's are specified

Deleted: shall

Deleted: are required.

Deleted: .

620.60.3.1.2 Type 2 Temporary RPM's shall be used as shown on the plans for the lane lines on all resurfacing projects.

620.60.3.2 On resurfacing projects, temporary RPM's shall be removed on intermediate lifts of asphalt before additional lifts are laid above them. Temporary RPM's on final wearing surfaces shall be removed if permanent striping is included in the contract.

Deleted: specified on the plans or as directed by the engineer

Deleted: .

620.60.4 Method of Measurement. Final measurement will not be made, except for authorized changes, during construction or where appreciable errors are found in the contract quantity. Where required, measurement of temporary raised pavement markers will be made per each. The revision or correction will be computed and added to or deducted from the contract quantity.

620.60.5 Basis of Payment. The accepted quantity of temporary RPM's will be paid for at the contract unit price for each of the pay items included in the contract, except when temporary RPM's are used in accordance with [Sec 620.2.5](#), then no direct payment will be made. No direct payment will be made for the removal of temporary RPM's.